



Sarah
Norville

Primary prevention and
child protection



Schools as hubs for family
support



**"There is no
power for change
greater than a
community
discovering what
it cares about."**

MARGARET J. WHEATLEY



Schools as hubs

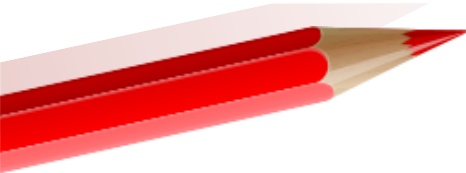


- Children in the UK spend 190 days per year in School.
 - The numbers fluctuate across the world, anywhere from 160 days in France to 230 days in Japan
 - Regardless of the country, children spend the vast majority of their time in School
 - Schools are the first point of support for families
 - Schools in the UK are increasingly expected to educate the parent as well as the child
- 

From referral to decision

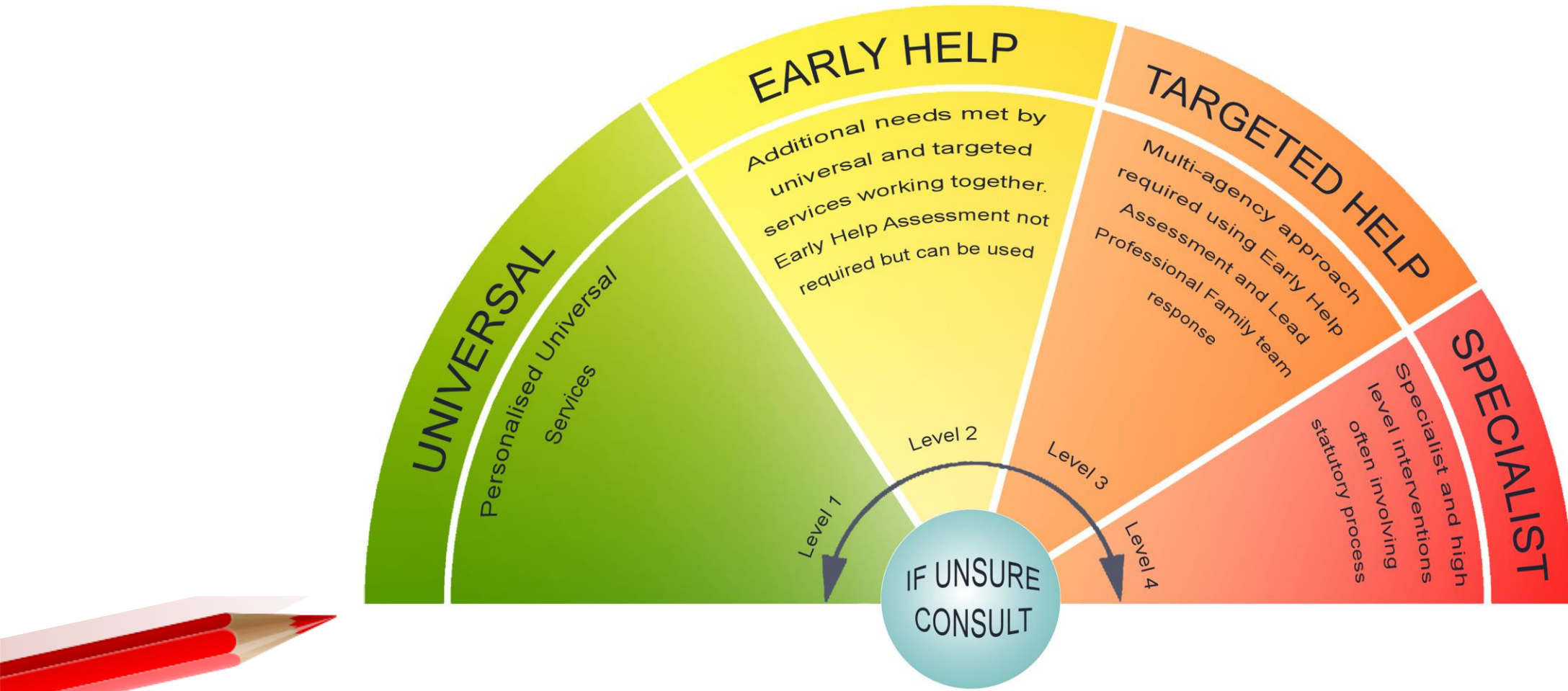


1. Referral sources:

- Police
 - School
 - Doctor / hospital
 - Family
 - Another source (Nursery, childcare provider, neighbour)
- 

2. Investigation

3. Decision – support, next steps...





Moving
forward

Steps to success

Levels of support



EARLY HELP

- Families can choose whether or not they engage (voluntary)
- Help will be offered by School / Nursery usually
- Children's Centres will be able to provide help
- Reviewed regularly

CHILD IN NEED PLAN

- Families can choose whether or not they engage (voluntary)
- More direct work with the Social Worker
- Children will be able to access additional support groups e.g. groups for children where there has been domestic violence in the family

CHILD PROTECTION PLAN



- Highest level of need. Statutory
- Regular meetings and support from Social Worker
- Higher level of family scrutiny